



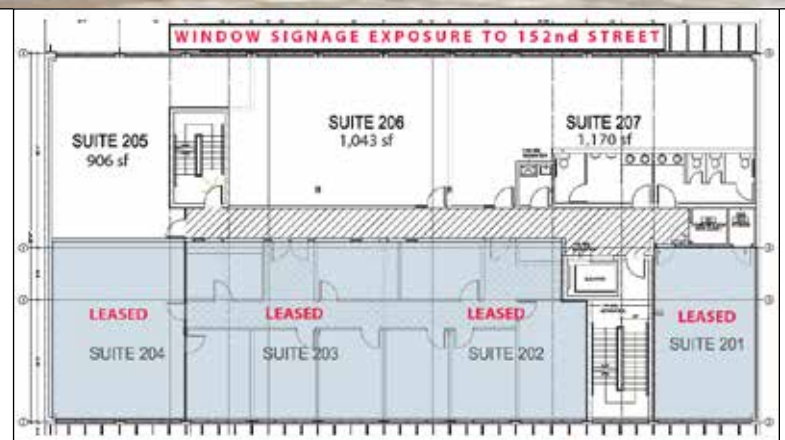
Guildford Central

10183 152A Street, Surrey, BC



Highlights

- Next to Starbucks
- Across from Guildford Town Centre
- Strong signage package & window graphics
- Small units starting at \$2,085 per month



FOR MORE INFORMATION PLEASE CONTACT:

Adam Rabeda
Cell: 604 376 5121
Mail: adam@rabedacre.com

500 - 889 West Pender Street, Vancouver, BC V6C 3B2
Office: 604 899 9293, Fax: 604 899 1293, www.rabedacre.com



ADAM RABEDA
PERSONAL REAL ESTATE
CORPORATION

Guildford Central

10183 152A Street, Surrey, BC

Opportunity

Guildford Central is a medical office building that offers office space on the second floor of lease in Guildford's busiest corridor in Surrey.

Location

This centrally located building is directly across from Guildford Town Centre with easy access to the TransCanada Highway (Highway #1) and the US Border via 152 Street.

Building

- 2 levels of underground parking
- Geothermal heating and LED lighting

Available

Unit 205 - 906 sq. ft.

Unit 206 - 1,043 sq. ft.

Unit 207 - 1,170sq. ft.

Zoning

C-15 (Town Centre Commercial)

Leasing Rate

\$18.00 per square foot

Operating Costs

\$11.00 per square foot



Adam Rabeda
Cell: 604 376 5121
Mail: adam@rabedacre.com

500 - 889 West Pender Street, Vancouver, BC V6C 3B2
Office: 604 899 9293, Fax: 604 899 1293, www.rabedacre.com



ADAM RABEDA
PERSONAL REAL ESTATE
CORPORATION